

Wild Willow

PHASE 2D ~ LOT D2

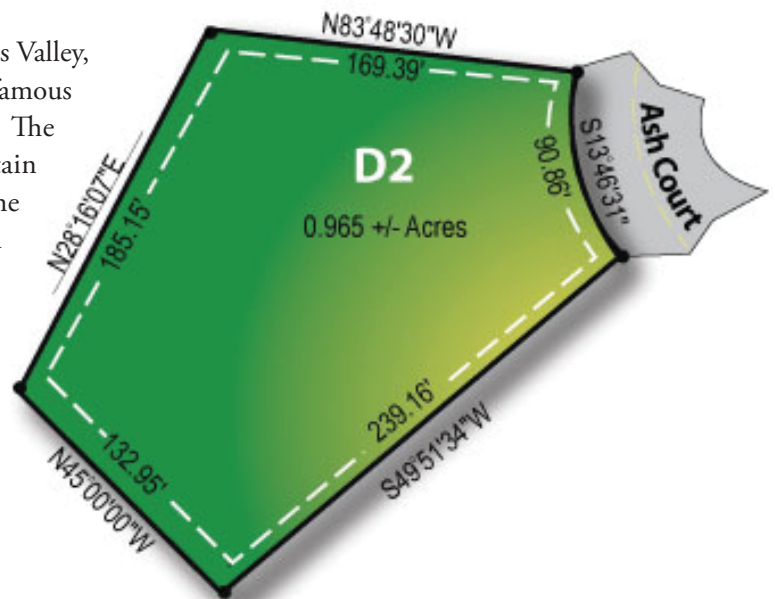
1899 S. Ash Court Road, Francis, Utah

FOR SALE Listed at **\$238,000**

Approximately .965 +/- Acres



Wild Willow Subdivision is located in the Kamas Valley, approximately fifteen minutes east of the world famous Park City and Deer Valley Resort, Utah. The subdivision consists of two phases that contain approx. 188 large building lots. To compliment the rural residential character of Wild Willow's sold out Phase One; Phase Two has been designed to accommodate horse owners and people who appreciate spacious living. Come see the pine-chipped bridle path and the 2.5 acre horse exercise area, which is completely fenced, landscaped and ready to use. For those who love horses or simply love spacious areas in which to live--walkers take note--
Wild Willow is a dream come true!



For Complete Specifications Please Visit www.WildWillow.net
or Call **Tom Flinders (801) 599-1933 OR (435) 649-7910**

FLINDERS
REALTY & EXCHANGE LLC
Comprehensive Real Estate Services

FlindersRealty.com
Toll Free 1-800-649-4755

Park City, UT 84098
Fax: (435) 649-3004

